

Faculty

Frieder Berr, Bernhard Paulweber
Andrej Wagner, Christian Mayr, Tobias Kiesslich
 Paracelsus Medical University, Dept. of Medicine I and
 Institut. of Physiology, Strubergasse 22, 5020 Salzburg, AT

Klaus Emmanuel, Josef Holzinger, Oliver Koch
 Department of Surgery, Muellner Hauptstrasse 46, 5020 Salzburg, AT

Anita Beyer
 IVEPA, Postfach 17, 1097 Vienna, AT

Jürgen Hochberger
 Dept. of Gastroenterology, Vivantes Klinikum im Friedrichshain
 Landsberger Allee 49, 10249 Berlin, DE

Sergey V. Kantsevov
 Institute for Digestive Health & Liver Diseases, Mercy Med. Center
 University of Maryland School of Medicine, Baltimore, MD, USA

Gerhard Kleber
 Department of Medicine I, Ostalb-Klinikum, 73428 Aalen, DE

Tadateru Maehata
 Cancer Center, Keio University School of Medicine,
 35 Shinanomachi, Shinjuku-ku, Tokyo, 160-8582, JP

Alexandr Mitrakov, Alena Klochkova
 Endoscopy Unit, Nizhniy Novgorod Cancer Hospital,
 Ankydinovskoe str. 1, ZIP 603081, Nizhniy Novgorod, RU

Daniel Neureiter
 Institute of Pathology, Paracelsus Medical University
 Salzburg / SALK, Muellner Hauptstr. 48, 5020 Salzburg, AT

Tsuneo Oyama, Akiko Takahashi
 Dpt. of Endoscopy, Saku Central Hospital Advanced Care Center,
 Zip code 3850051, 3400-28 Nakagomi, Saku, Nagano, JP

Takashi Toyonaga, Shinichi Baba
 Department of Internal Medicine, Graduate School of Medicine, Kobe
 University, 7-5-1 Chu-o-ku, Kusunoki-Cho, Kobe, Hyogo, 650-0017, JP

Rainer Schöfl, Alexander Ziachehabi
 Department of Internal Medicine IV, Elisabethinen Hospital, Linz, AT

Hans Seifert
 Department of Internal Medicine - Gastroenterology, University
 Clinics Oldenburg, Rahel-Straus-Str. 10, 26133 Oldenburg, DE

Toshio Uraoka
 Department of Gastroenterology, Tokyo medical center.
 2-5-1, Higashigaoka, Meguro-ku, Tokyo, 152-8902, JP

Tadateru Maehata
 Cancer Center, Keio University School of Medicine,
 35 Shinanomachi, Shinjuku-ku, Tokyo, 160-8582, JP

Sponsors



Leonie Wild Charitable Foundation



10th Update on Endoscopic Skills 2018

How to diagnose and resect Early Gastrointestinal Cancer

18th of May, 2018
 8:00 - 16:15

credits
 8 DFP

Paracelsus Medical University Salzburg, Auditorium Haus C

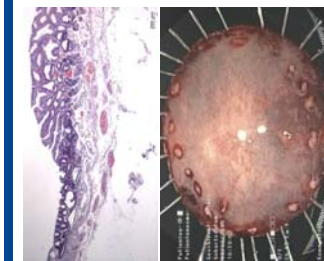
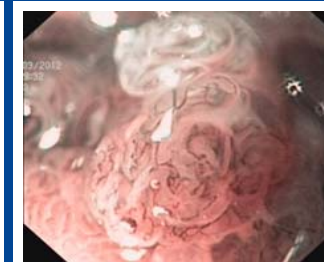
Directors

Rainer Schöfl / AT
 Klaus Emmanuel / AT
 Thierry Ponchon / FR
 Hans Seifert / DE

Organizers

Bernhard Paulweber / AT
 Andrej Wagner / AT
 Frieder Berr / AT
 Josef Holzinger / AT
 Tobias Kiesslich / AT
 Christian Mayr / AT

Pre-Registration endo18@pmu.ac.at
www.gastroenterologie-salzburg.at



Department of Internal Medicine I
 Department of Surgery
 Institute of Physiology and Pathophysiology



PARACELSUS
 MEDIZINISCHE PRIVATUNIVERSITÄT

UNIVERSITY HOSPITALS
 UNIKLINIKUM
 SALZBURG

Dear Colleagues,

we invite you to improve your skills in endoscopic analysis and therapeutic decision making on early neoplasias of the gastrointestinal tract:

- Accurate endoscopic assessment of surface and microvascular structure (white light, NBI & BLI)
- Indications for endoscopic versus minimal invasive surgical resection techniques
- Techniques for mucosal resection, submucosal dissection, thoraco-/laparoscopic resection

This meeting focuses on technical aspects to optimize endoscopic analysis and staging of neoplasias as well as strategies and performance of minimally invasive resections.

We hope to stimulate your interest and welcome you to the 10th Update on Endoscopic Skills in Salzburg.



The seminar takes place under the patronage of

Endorsed by



ESD LIVE demonstrations, 4 cases

Toyonaga T (Flush-BT knife) **Holzinger J** (Dual-J knife)
comments: Kleber G, Hochberger J Wagner A, Uraoka T

Oyama T (Hook-J knife) **Mitrakov A** (Hybrid-knife)
comments: Ziachehabi A Seifert H

8:15 Welcome

Session I - 8:15 - 10:30

Detection & Analysis of Upper GI Early Neoplasias

Chairs: Paulweber B, Beyer A, Oyama T, Seifert H

Mitrakov A: **E-learning for endo-detection of early gastric cancer (Quiz)**

Takahashi A: **Magnifying endoscopic analysis of early gastric cancer**

Oyama T: **How to stage early cancer in hypopharynx, esophagus and Barrett's mucosa (Quiz)**

10:30 - 11:00 - Coffee break and Industry Exhibition

Session II - 11:00 - 12:30

Endoscopic Analysis & Resection of GI Neoplasias

Chairs: Neureiter D, Uraoka T, Ziachehabi A

Maehata T: **How to assess early colorectal neoplasias for resection (Quiz)**

Toyonaga T: **Lesion-specific strategies for ESD and STER in GI tract**

12:30 - 13:30 - Lunch and Industry Exhibition

Session III - 14:00 - 16:15

Resection Strategies for Early GI Cancers

Chairs: Emmanuel K, Hochberger J, Kantsevov S, Toyonaga T

Uraoka T: **Technical skills and tricks for ESD**

Kantsevov S: **ESD & Endoscopic suturing - for single day clinic**

Koch O: **Laparoscopic / thoracoscopic resection techniques**

Conclusions and Farewell

Parking

Parking space is available at the Paracelsus Medical University Salzburg, Strubergasse 21

Registration

Pre-registration desirable under endo18@pmu.ac.at (for adequate organisation); please include name, address and number of participants

Credits

8 DFP points (Diplom-Fortbildung, www.arztakademie.at, Fortbildungs-ID: n.n.)

Contact Information

Tobias Kiesslich, PhD

email: endo18@pmu.ac.at

URL www.gastroenterologie-salzburg.at

Venue

Paracelsus Medical University, Auditorium Haus C
Strubergasse 22, 5020 Salzburg, Austria



Arrival by car: from autobahn (A1, Westautobahn) take exit 'Salzburg Mitte', follow straight on Münchener Bundesstrasse / Ignaz Harrer Strasse → turn right to Gaswerkgasse → turn left to Strubergasse